

CABEZAL DESBROZADOR HIDRÁULICO MOD. KXM-T/KXM-F



= DESPIECE

1++ _____ ^ _____

I ECLATEE ET PIECES DE RECHANGE -+■

SPARE PARTS LIST



Estimado cliente,

Ante todo gracias por confiar en un producto Niubo. A continuacion se encuentra el despiece de la maquina adquirida. Si usted desea pedir piezas de recambio debera indicarnos lo siguiente o bien hacer servir el recuadro que viene a continuacion.

^ ® Cher client,

Tout d'abord merci d'avoir choisi un produit Niubo. Ci-dessous, il y a le eclatee de la machine achetee. Si vous souhaitez commander des pieces de rechange, vous devez fournir les donees suivants ou vous pouvez servir la case qui suit.

Dear customer,

First of all thanks for choosing a product Niubo. Below is the spare part list of the machine purchased. If you wish to order spare parts you must provide us the following data or you can

Modelo maquina: *Modele*
machine Machine model

Numero de serie de la maquina:
Nombre de serie
Serial Nr _____

Numero de elemento de la pieza de recambio: *Nombre*
d'element de la piece detachee Spare part's element number

Pagina donde se encuentra:
Page de cet manuel ou se trouve la piece Page number where
is the spare part _____

Cantidad a pedir:
Quantitee a commander
Quantity to order _____

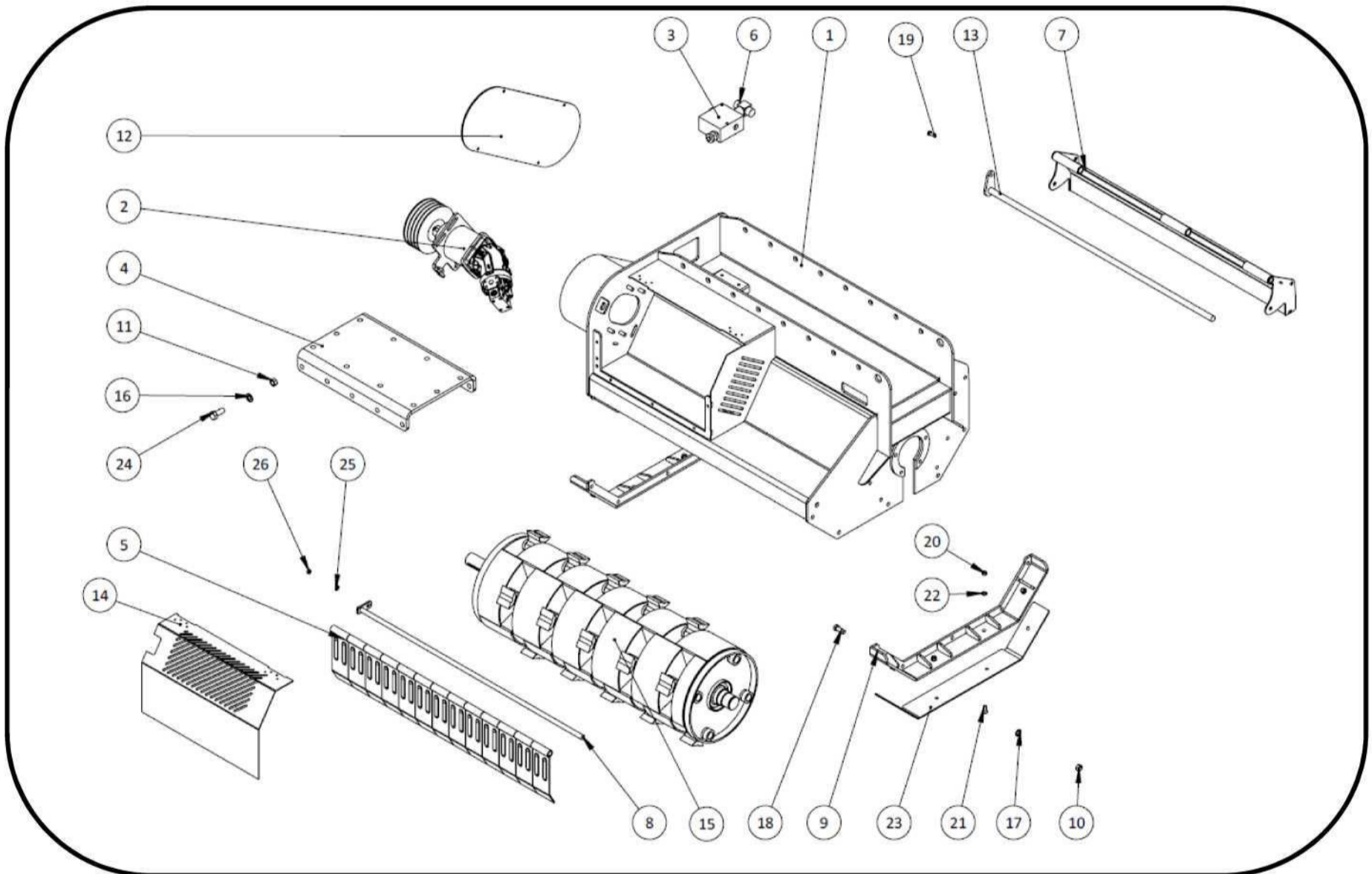
serve the box that follows.

En la placa de identificacion de la maquina encontrara la informacion que se le solicita:
A la plaque d'identification de la machine vous trouverez l'information que vous avez besoin:
In ID plate of the machine you can find the information you need:

S3 niUBO
AGRICULTURAL MACHINERY

ANO FABRICACION YEAR MANUFACTURE ANNEE
FABRICATION

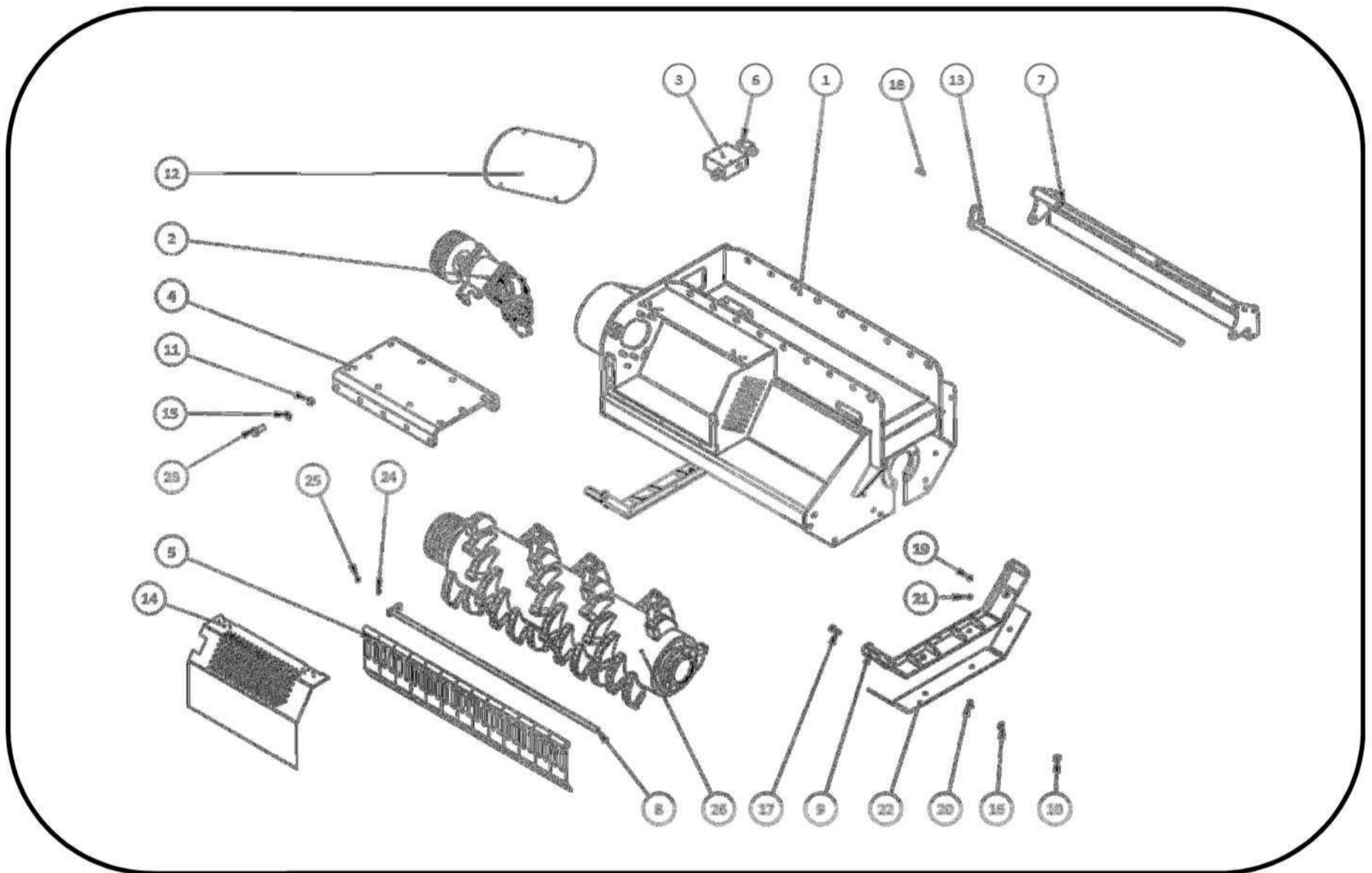
CONJUNTO CABEZAL HIDRAULICO/ENSEMBLE TÊTE DE BROYAGE HYDRAULIQUE/HYDRAULIC MULCHING
HEAD ASSEMBLY



**CONJUNTO CABEZAL HIDRAULICO/ENSEMBLE TÊTE DE BROYAGE
HYDRAULIQUE/HYDRAULIC MULCHING HEAD ASSEMBLY**

N°	Артикул	DESCRIPTION	DÉSCRIPTION
1	DT1P1	Chassis assembly	Ensemble chassis
2	DT1P2	Set engine	Ensemble moteur
3	DT1P3	FPRF-1 regulator	Regulateur FPRF-1
4	DT1P4	Coupling	Attelage
5	DT1P5	Long skirt	Jupe longue
6	DT1P6	Distributor T	Distributeur T
7	DT1P7	Door set	Ensemble de porte
8	DT1P8	Support skirt bar	Baleine support jupe
9	DT1P9	Skid set	Ensemble de patins
10	DT1P10	Nut DIN 985 M16	Écrou DIN 985 M16
11	DT1P11	Nut DIN 985 M18	Écrou DIN 985 M18
12	DT1P12	Belt cover	Casquette de ceinture
13	DT1P13	Support tipping bar	Baleine support basculement
14	DT1P14	Engine cover	Couverture du moteur
15	DT1P15	Conjunto eje de martillos	Axe de marteaux
16	DT1P16	Washer DIN 125 M20	Rondelle DIN 125 M20
17	DT1P17	Washer DIN 125 M16	Rondelle DIN 125 M16
18	DT1P18	Hexagonal screw DIN 933 M16x40	Vis hexagonale DIN 933 M16x40
19	DT1P19	Hexagonal screw DIN 933 M10x30	Vis hexagonale DIN 933 M10x30
20	DT1P20	Nut DIN 985 M12	Écrou DIN 985 M12
21	DT1P21	Screw DIN 7991 M12x30	Vis DIN 7991 M12x30
22	DT1P22	Washer DIN 125 M12	Rondelle DIN 125 M12
23	DT1P23	Interchangeable skid	Patin interchangeable
24	DT1P24	Hexagonal screw DIN 933 M20x50	Vis hexagonale DIN 933 M20x50
25	DT1P25	Washer DIN 125 M10	Rondelle DIN 125 M10
26	DT1P26	Nut DIN 985 M10	Écrou DIN 985 M10

CONJUNTO CABEZAL HIDRAULICO/ENSEMBLE TÊTE DE BROYAGE HYDRAULIQUE/HYDRAULIC MULCHING HEAD ASSEMBLY

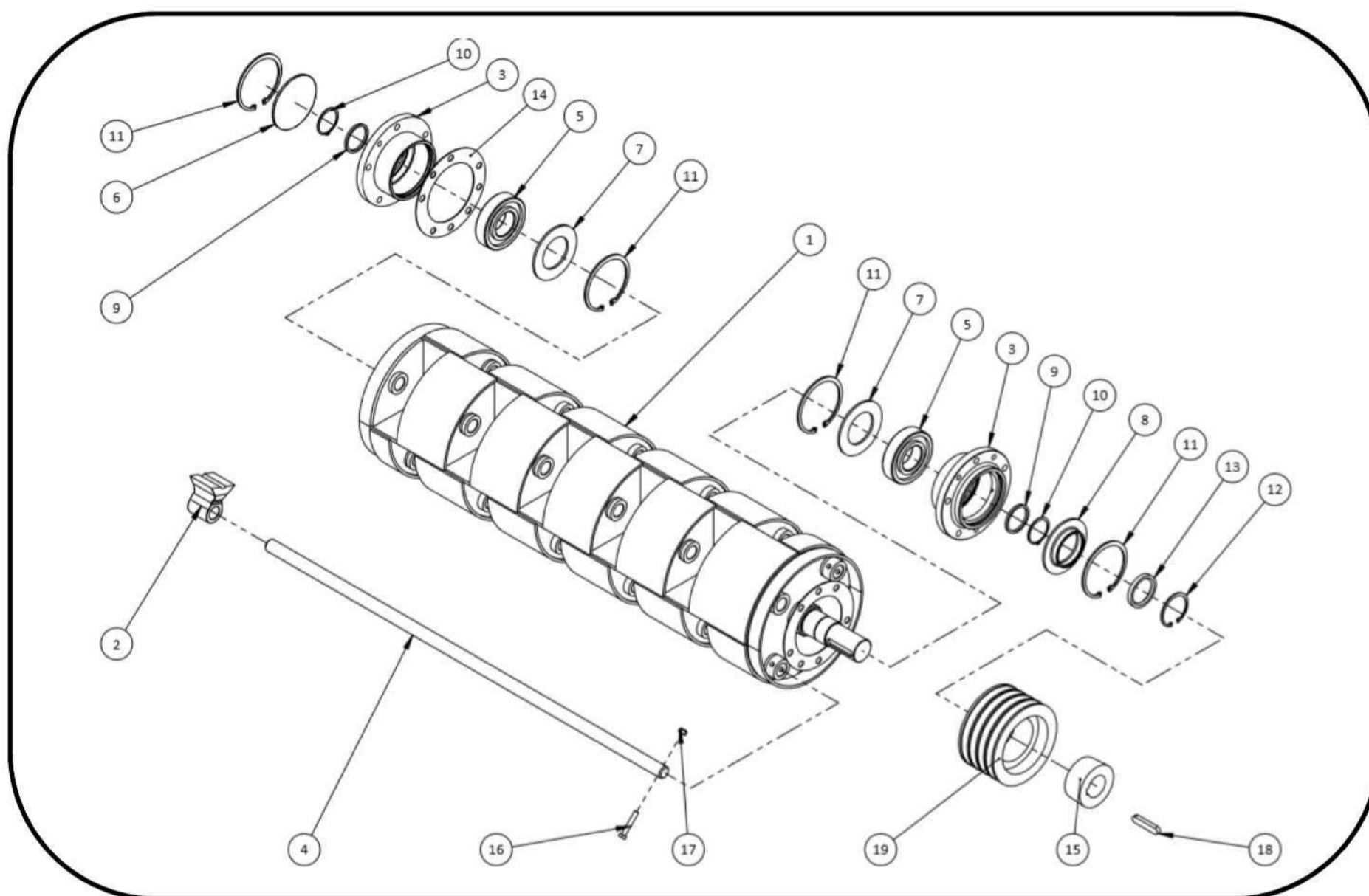


**CONJUNTO CABEZAL HIDRAULICO/ENSEMBLE TETE DE BROYAGE
HYDRAULIQUE/HYDRAULIC MULCHING HEAD ASSEMBLY**

N°	Артикул	DESCRIPTION	DÉSCRIPTION
1	DT2P1	Chassis assembly	Ensemble chassis
2	DT2P2	Set engine	Ensemble moteur
3	DT2P3	FPRF-1 regulator	Regulateur FPRF-1
4	DT2P4	Coupling	Attelage
5	DT2P5	Long skirt	Jupe longue
6	DT2P6	Distributor T	Distributeur T
7	DT2P7	Door set	Ensemble de porte
8	DT2P8	Support skirt bar	Baleine support jupe
9	DT2P9	Skid set	Ensemble de patins
10	DT2P10	Nut DIN 985 M16	Écrou DIN 985 M16
11	DT2P11	Nut DIN 985 M18	Écrou DIN 985 M18
12	DT2P12	Belt cover	Casquette de ceinture
13	DT2P13	Support tipping bar	Baleine support basculement
14	DT2P14	Engine cover	Couverture du moteur
15	DT2P15	Washer DIN 125 M20	Rondelle DIN 125 M20
16	DT2P16	Washer DIN 125 M16	Rondelle DIN 125 M16
17	DT2P17	Hexagonal screw DIN 933 M16x40	Vis hexagonale DIN 933 M16x40
18	DT2P18	Hexagonal screw DIN 933 M10x30	Vis hexagonale DIN 933 M10x30
19	DT2P19	Nut DIN 985 M12	Écrou DIN 985 M12
20	DT2P20	Screw DIN 7991 M12x30	Vis DIN 7991 M12x30
21	DT2P21	Washer DIN 125 M12	Rondelle DIN 125 M12
22	DT2P22	Interchangeable skid	Patin interchangeable
23	DT2P23	Hexagonal screw DIN 933 M20x50	Vis hexagonale DIN 933 M20x50
24	DT2P24	Washer DIN 125 M10	Rondelle DIN 125 M10
25	DT2P25	Nut DIN 985 M10	Écrou DIN 985 M10
26	DT2P26	Conjunto eje de martillos	Axe de marteaux

£3 niUBO
AGRICULTURAL MACHINERY

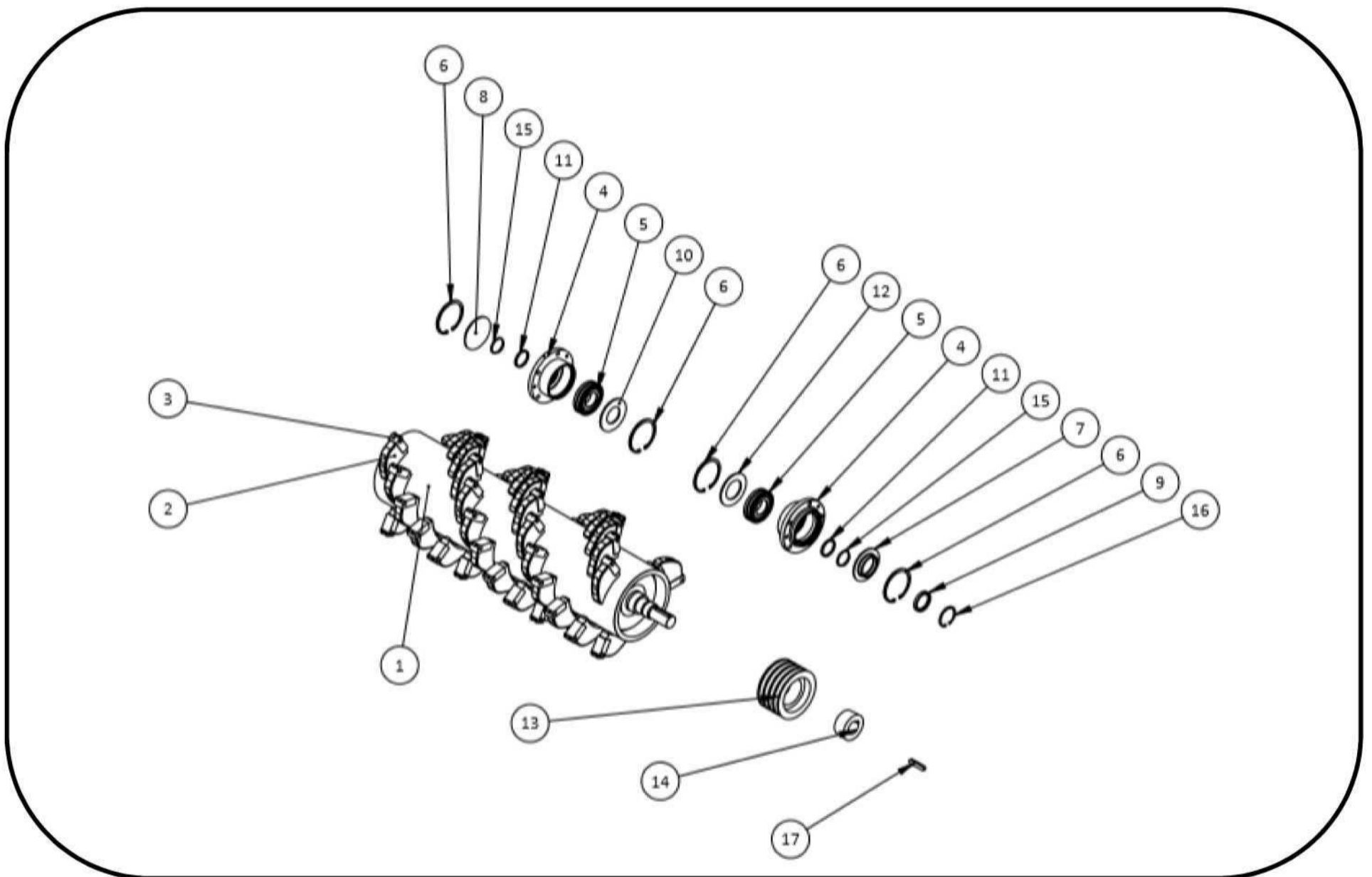
EJE DE MARTILLOS/AXIS OF HAMMERS/AXE DE MARTEAUX



EJE DE MARTILLOS/AXIS OF HAMMERS/AXE DE MARTEAUX

N°	Артикул	DESCRIPTION	DÉSCRIPTION
1	DT3P1	Base Axis of hammers	Base Axe de marteaux
2	DT3P2	Forest hammer in T	Marteau de la foret en T
3	DT3P3	Axis of hammers	Axe de marteaux
4	DT3P4	Hammer support rod	Tige de support de marteau
5	DT3P5	Oscillating Bearing 21312	Roulement oscillant 21312
6	DT3P6	Cover outside box	Couvercle caisse exterieur
7	DT3P7	Washer protection	Protection de rondelle
8	DT3P8	Cover support seal	Couvercle support reten
9	DT3P9	Washer supplement	Rondelle supplement
10	DT3P10	Ring Seger I-60	anneau Seger I-60
11	DT3P11	Ring Seger I-135	anneau Seger I-135
12	DT3P12	Ring Seger I-80	anneau Seger I-80
13	DT3P13	Seal 60x80X10	Reten 60x80X10
14	DT3P14	Washer supplement	Rondelle supplement
15	DT3P15	Tapper 3020-55	Tapper 3020-55
16	DT3P16	Hexagonal screw DIN 931 M10x70	Vis hexagonale DIN 931 M10x70
17	DT3P17	Nut DIN 985 M10	Écrou DIN 985 M10
18	DT3P18	Cotter 16x10x80	Clavette 16x10x80
19	DT3P19	Fan belt SPB 200-4C	Poulie SPB 200-4C

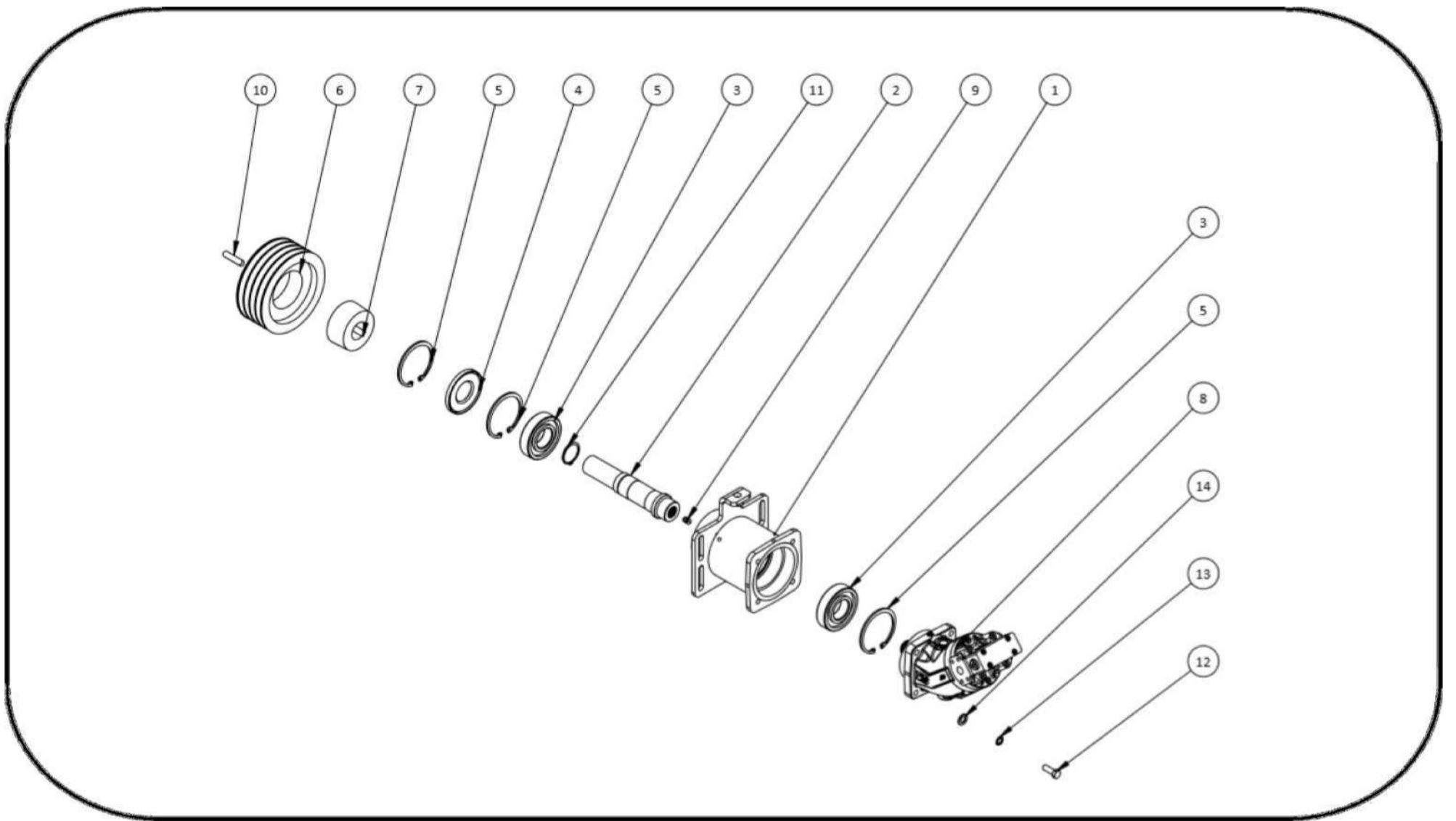
EJE DE MARTILLOS/AXIS OF HAMMERS/AXE DE MARTEAUX



EJE DE MARTILLOS/AXIS OF HAMMERS/AXE DE MARTEAUX

N°	Артикул	DESCRIPTION	DÉSCRIPTION
1	DT4P1	Forestry axis for fixed hammers	Base Axe de marteaux
2	DT4P2	Support fixed forestry hammer	Soutenir le marteau forestier fixe
3	DT4P3	Hammer	Marteaux
4	DT4P4	Axis of hammers	Axe de marteaux
5	DT4P5	Oscillating Bearing 21312	Roulement oscillant 21312
6	DT4P6	Aro Seger I-100	Aro Seger I-100
7	DT4P7	Cover support seal	Couvercle support reten
8	DT4P8	Cover outside box	Couvercle caisse exterior
9	DT4P9	Seal 60x80X10	Reten 60x80X10
10	DT4P10	Washer protection	Protection de rondelle
11	DT4P11	Washer supplement	Rondelle supplement
12	DT4P12	Washer protection(inside)	Protection de rondelle (interieur)
13	DT4P13	Fan belt SPB 200-4C	Poulie SPB 200-4C
14	DT4P14	Tapper 3020-55	Tapper 3020-55
15	DT4P15	Ring Seger E-60	anneau Seger E-60
16	DT4P16	Ring Seger I-80	anneau Seger I-80
17	DT4P17	Cotter 16x10x80	Clavette 16x10x80

CONJUNTO MOTOR *HIDRAULICO/HYDRAULIC MOTOR ASSEMBLY/ENSEMBLE MOTEUR HYDRAULIQUE*



**CONJUNTO MOTOR HIDRAULICO/HYDRA ULIC MOTOR ASSEMBLY/ENSEMBLE
MOTEUR HYDRAULIQUE**

N°	Артикул	DESCRIPTION	DÉSCRIPTION
1	DT5P1	Engine set	Ensemble moteur
2	DT5P2	Axis prolongation engine	Axe prolongation moteur
3	DT5P3	Bearing 6310	Roulement 6310
4	DT5P4	Seal 50x110x10	Reserve 50x110x10
5	DT5P5	Ring Seger I-110	Anneau Seger I-110
6	DT5P6	Fan belt SPB 200-4C	Poulie SPB 200-4C
7	DT5P7	Tapper 3020-45	Tapper 3020-45
8	DT5P8	Tapper 2517-40	Tapper 2517-40
9	DT5P9	Greaser M-06	Graisser M-06
10	DT5P10	Cotter 14x09x60	Clavette 14x09x60
11	DT5P11	Ring Seger E-50	Anneau Seger E-50
12	DT5P12	Hexagonal screw DIN 931 M12X35	Vis hexagonale DIN 931 M12X35
13	DT5P13	Washer grower DIN 127 M12	Rondelle grower DIN 127 M12
14	DT5P14	Washer DIN 125 M16	Rondelle DIN 125 M14